

## Tanks – CCT 2,500 hl

### CCT Tanks

Indoor CC-Tanks for Fermenting and Storage in perfect and good condition.  
Stainless Steel. Cooling Agent Glycol.

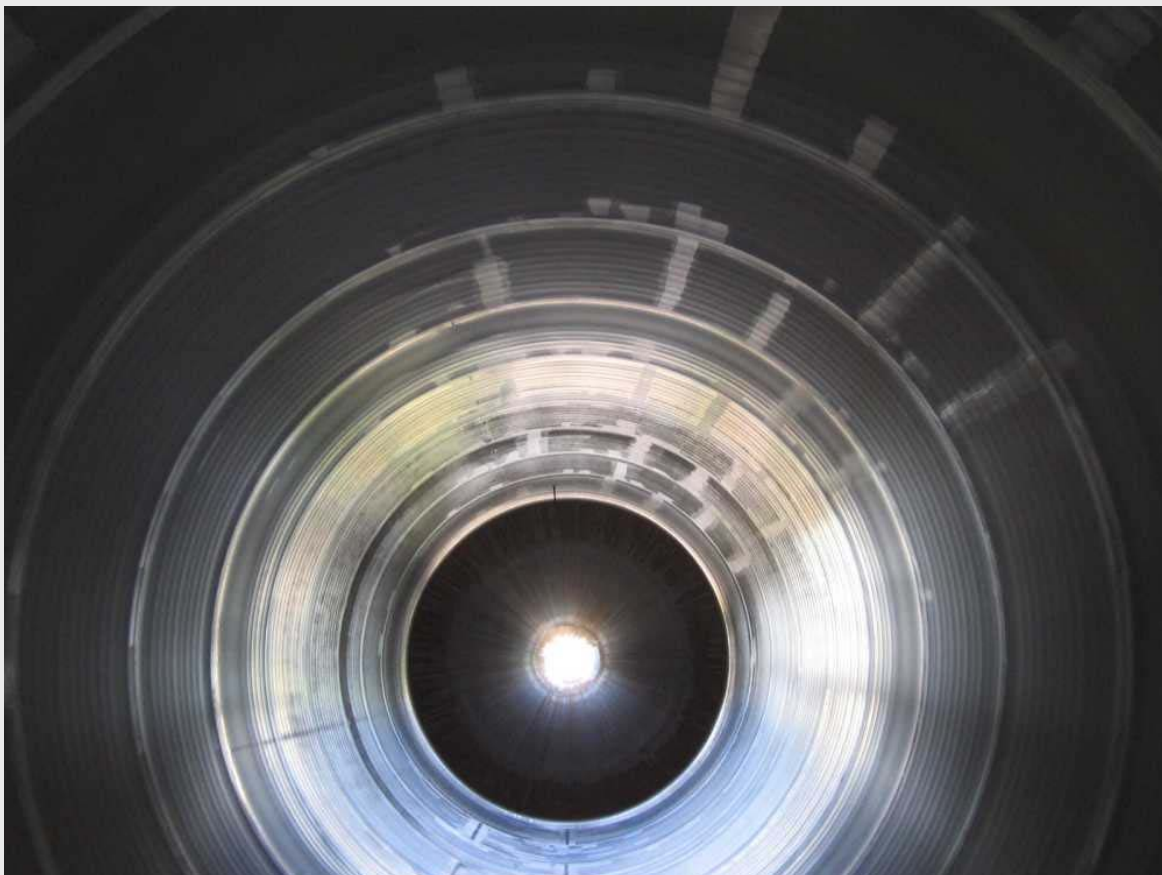
2 x CCT - cooling agent Glycol - without isolation - Ø 4,210 mm - high: 20,990 mm - 4 x cooling jackets of 128 m <sup>2</sup> - 1 x cooling jacket of 4 m <sup>2</sup> at conus	each 2,500 hl (gross)	1991	Ziemann
8 x CCT - cooling agent Glycol - without isolation - Ø 4,200 - high: 19,004 mm - 2 x cooling jackets of 61.5 m <sup>2</sup> - 1 x cooling jacket 7.4 m <sup>2</sup> at conus	each 2,400 hl (gross)	1972	Meura

For more information please ask for detailed documents provided by ESCHENLOHR.

### Price

Price:

Basis for negotiation



Tanks